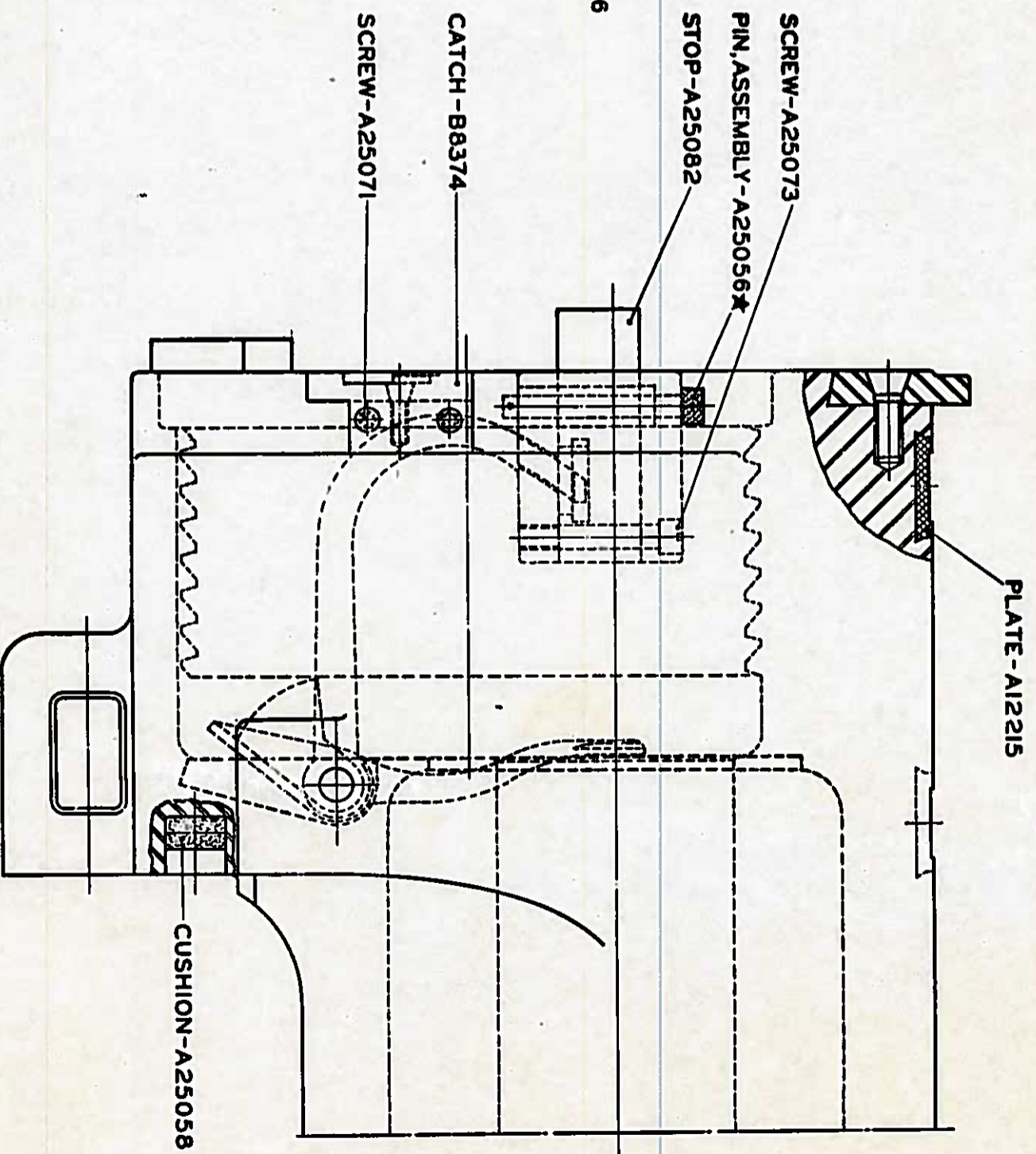
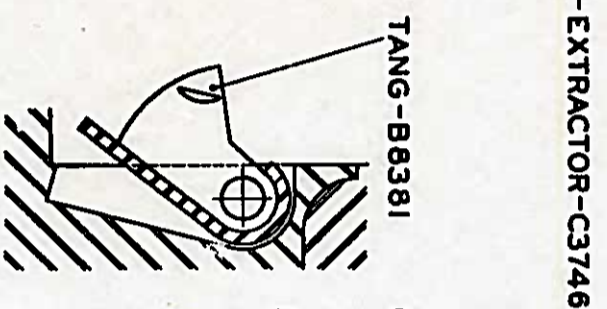


BOLT - B8372
SCREW - A25078
SPRING - B8380

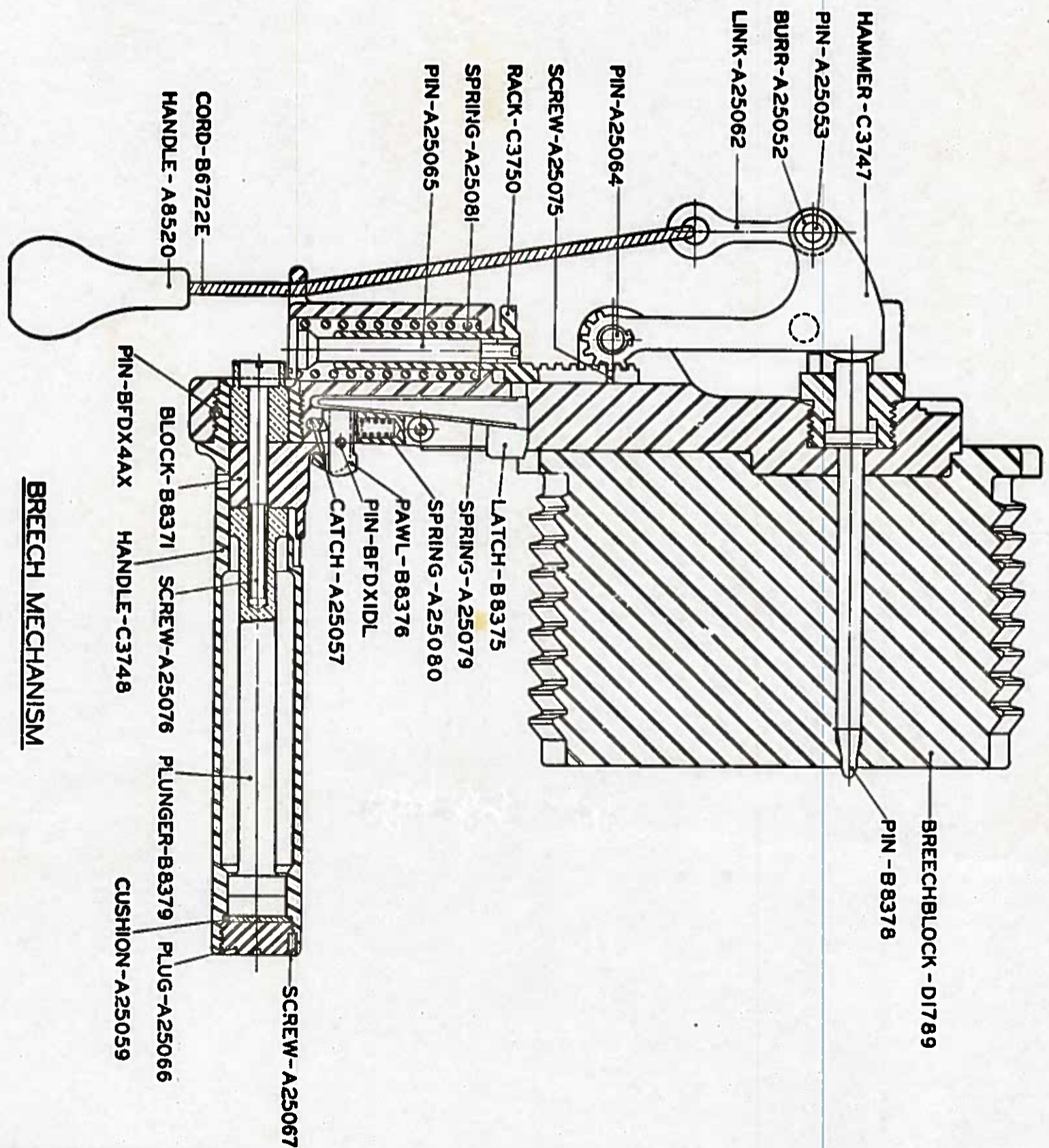
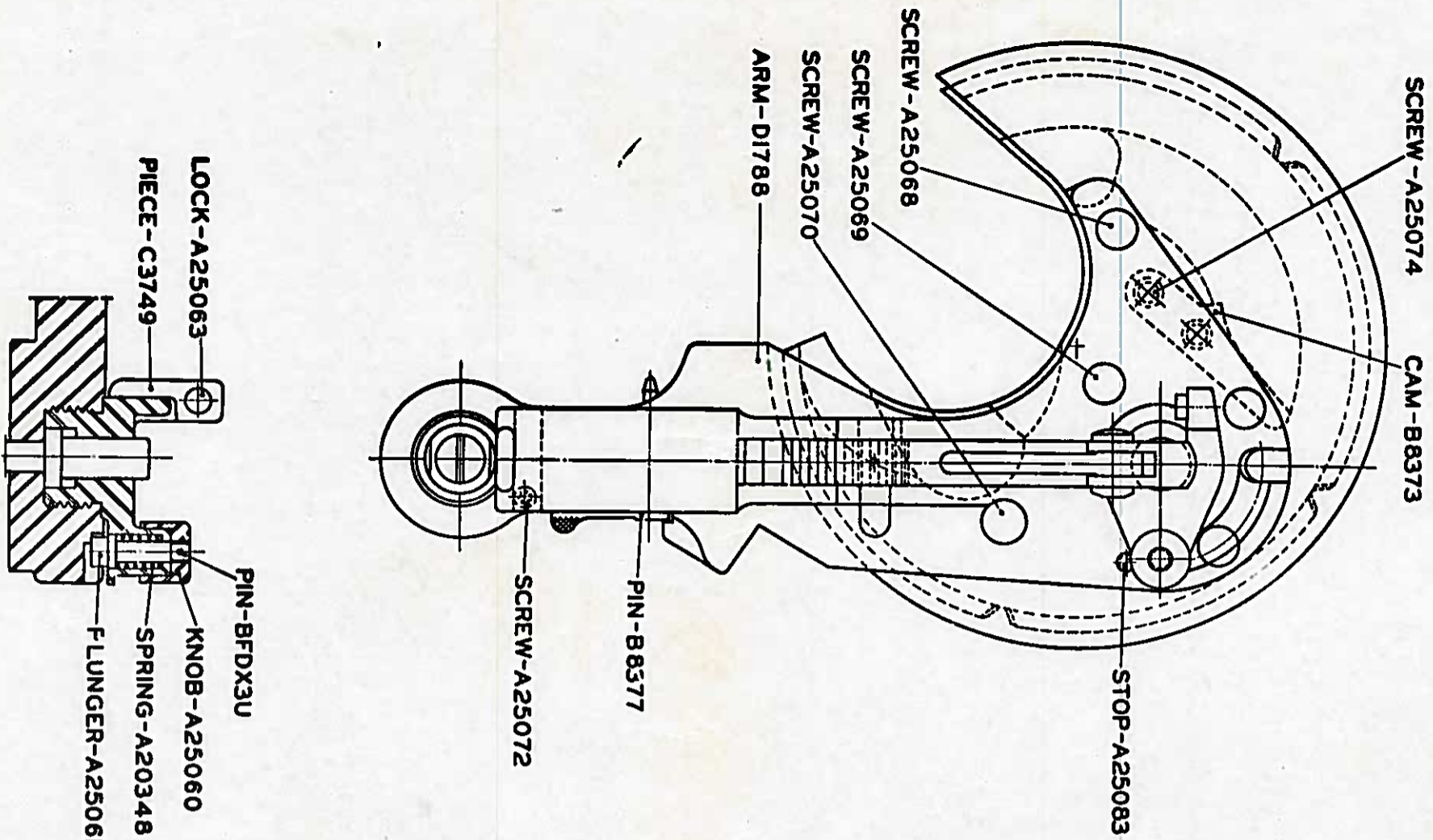


BARREL ASSEMBLY



* FINDING C

OCTOBER 14, 1938		CLA
REVISIONS		
1	9-15-38	
R	PASWETZ	
	SEE EA.	
	1/16 3	
	H-4-J	
DRG. PERTAINS TO		EXAM
52-221		
D1787		DRG.



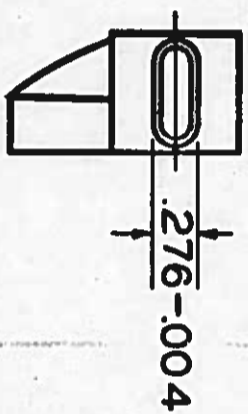
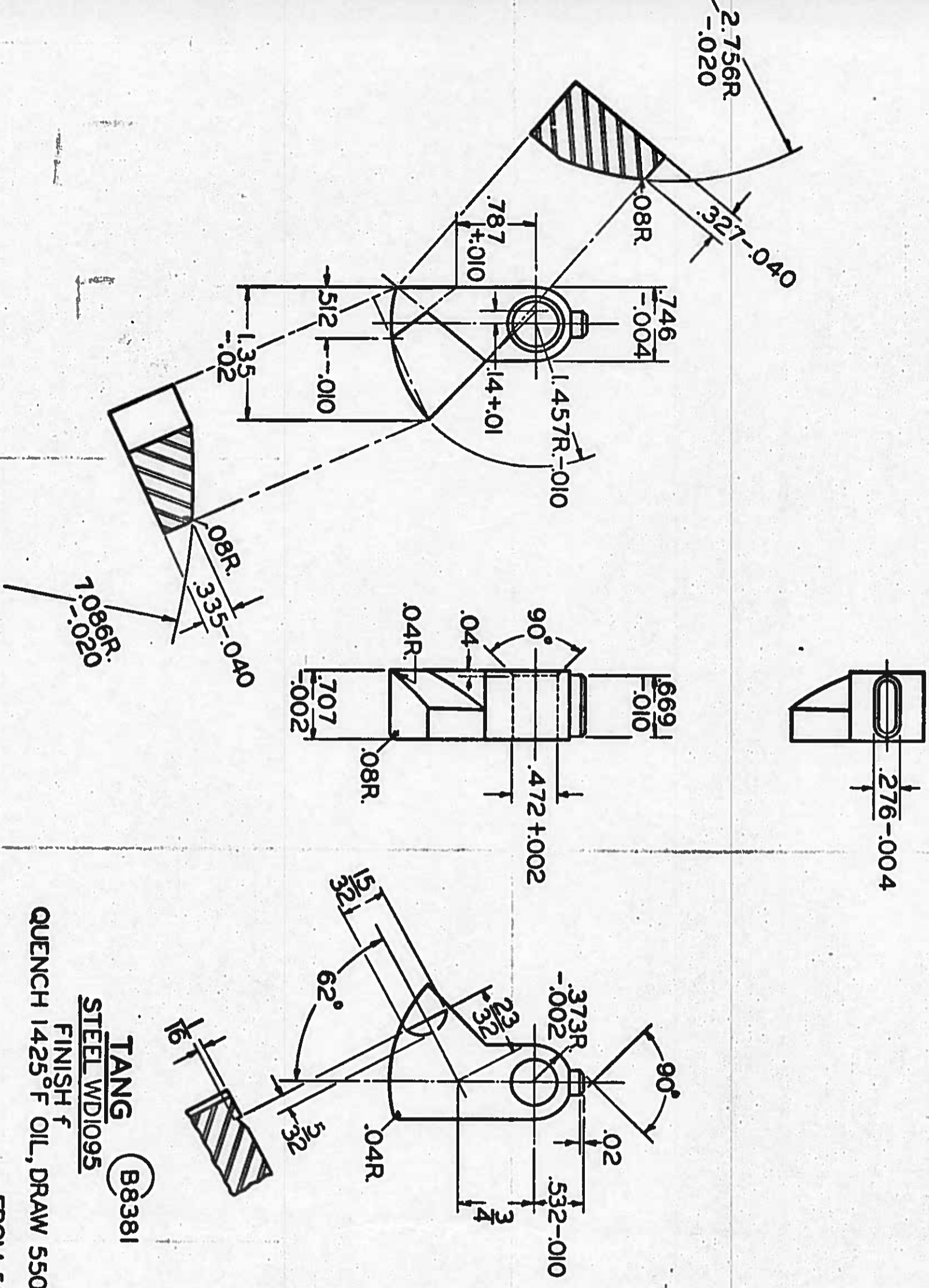
BRECH MECHANISM



NOTI
MOT E
LITHA
CSPH
MACH
SERII

OCTOBER 14, 1938	
REVISIONS	
A	8810cm
	SEE E.O.
	1163
	11-7-38
DRG. PERTAINS TO	
52-221	
D1786	

2



TANG (B8381)
 STEEL WDI095
 FINISH f
 QUENCH 1425° F OIL, DRAW 550° F.

SCALE 1/16

FROM 52-85-14

B8381

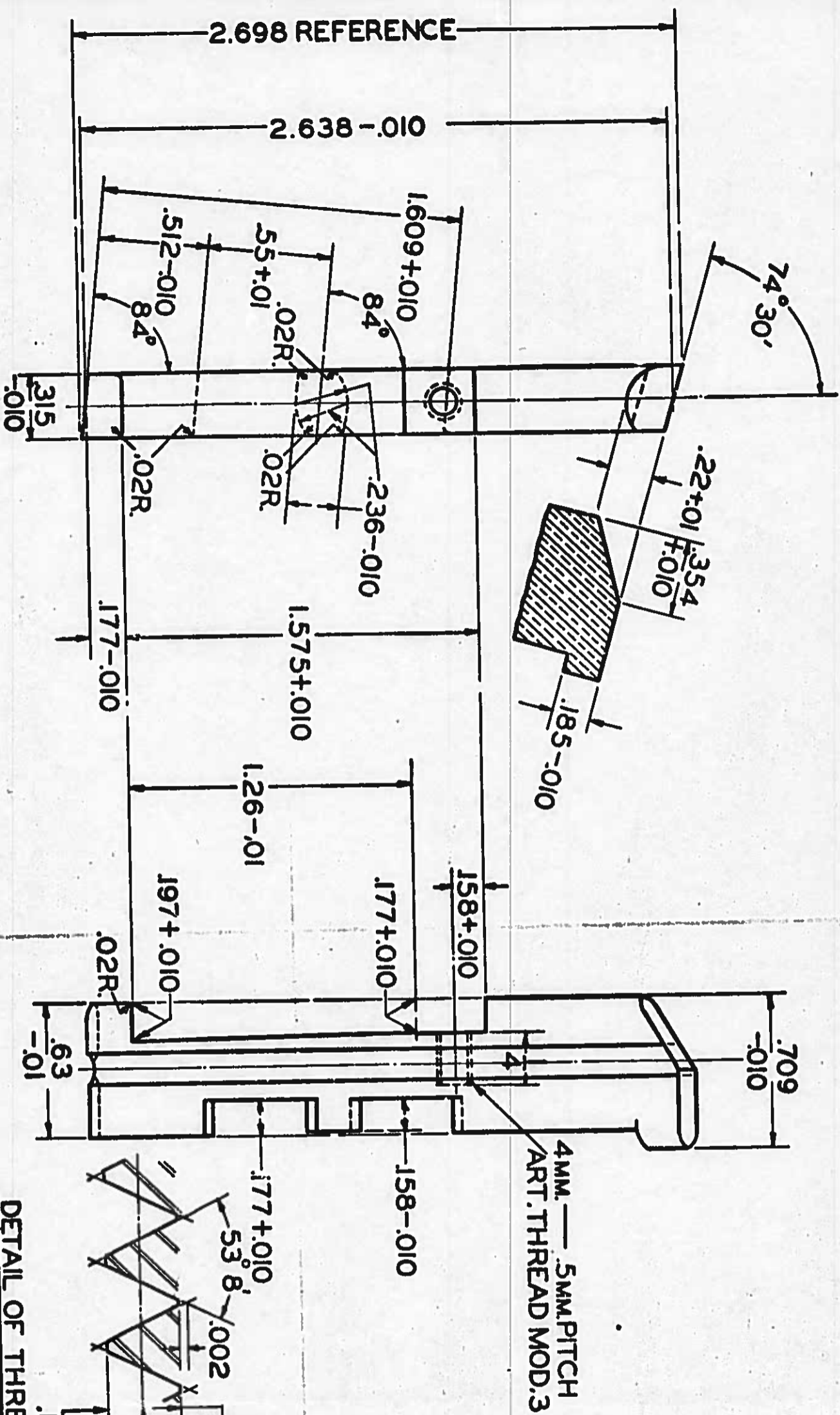
PHYSICAL PROPERTIES		REVISIONS	
Y.P.	—	A	OBsolete
T.S.	—		SEE E.O.
EL-2	—		11663
RED.	—		11-4-59
HT.T.	—		
BR.	—		
SCL	—		
C.C.	—		

DRG. PERTAINS TO
 52-85
 D1787

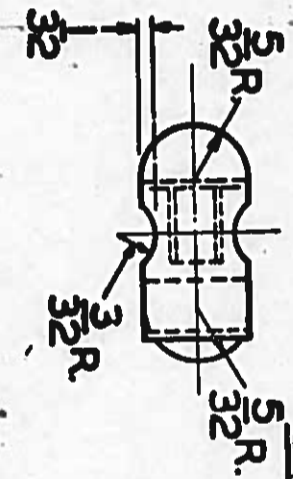
SYMBOL		LFT 1	
DFTSMAN	TRACER	L'D.G. DFTSMAN	
R.C.F.	R.C.F.		
CHECKER	CHECKER	CHIEF DFTSMAN	
C.T.K.	CK		

SUBMITTED: *[Signature]*

APPROVED: *[Signature]*
 LT.COL. ORD. DEPT. U.S.A.



BOLT (B8372)
NAVAL BRASS, HALF HARD
FINISH f



DETAIL OF THREAD
 MAJOR DIA. 1.555 MIN.
 PITCH DIA. .1398 + .0017
 MINOR DIA. .1280 + .0023

PHYSICAL PROPERTIES	OCTOBER 14, 1938	REVISIONS
Y.S. 27000	A	OBSELETE
T.S. 60000		SEE EQ.
EL-2 35%		11663
RED.		11-4-59
HT.T.		
BR.		
SCL.		
C.C.		

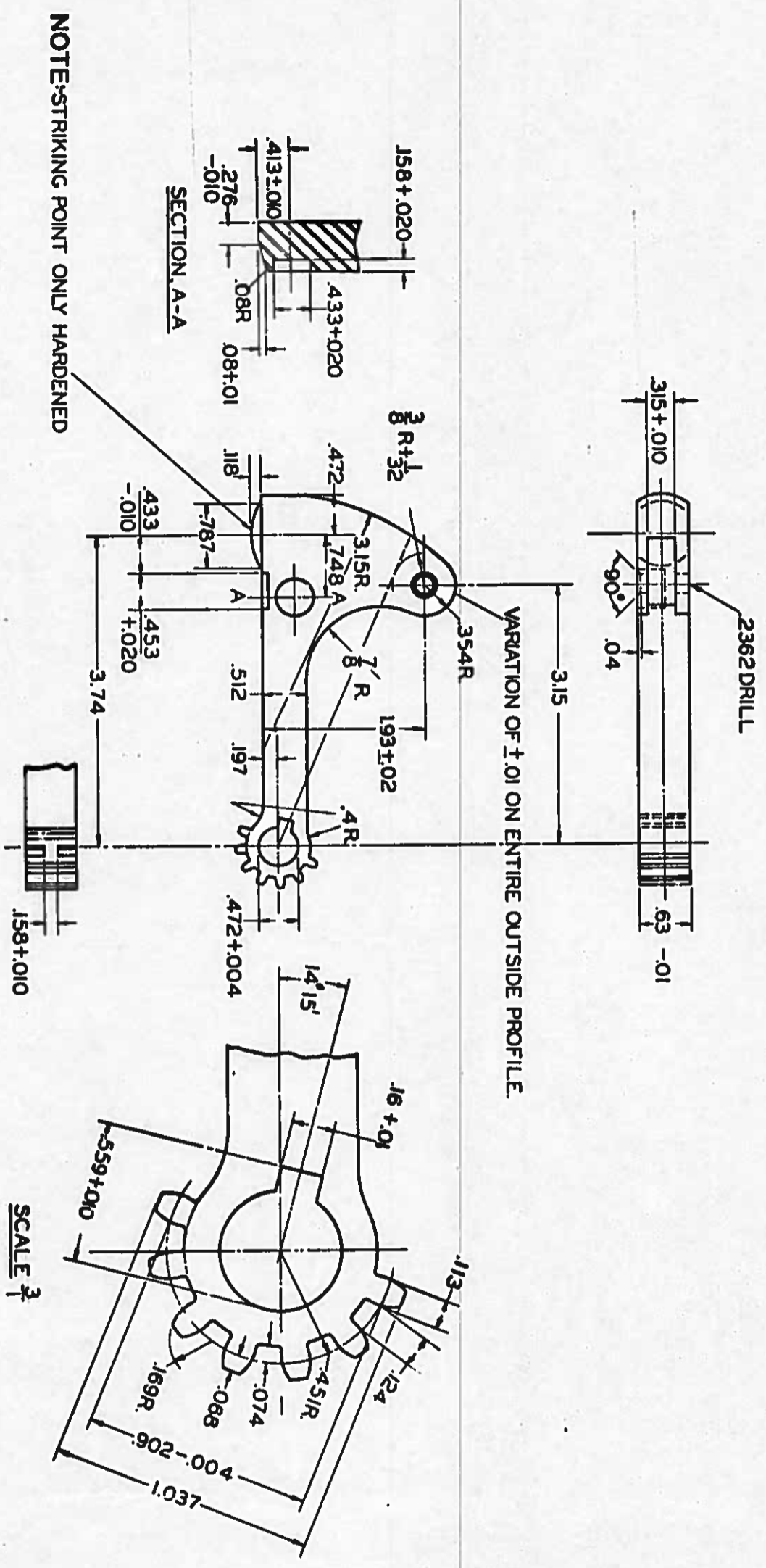
DRG. PERTAINS TO
 52-85
 D1787

SYMBOL
VOB387

DESIGNED BY TRAGER, L. O. D. T. S. W. M.
 F.S.R. F.S.R. O.S.
 CHECKED BY CHECKER, D. T. S. W. M.
 C.T.K. R. D. S. W. M.
 QUANTITIES:-
 APPROVED BY
 LT. COL. ORD. DEPT. USA
 FROM 52-85-23
B8372

SCALE 1/2

2



HAMMER
STEEL WD1095
FINISH $\frac{1}{4}$
C3747

SCALE $\frac{3}{4}$

SCALE $\frac{1}{4}$

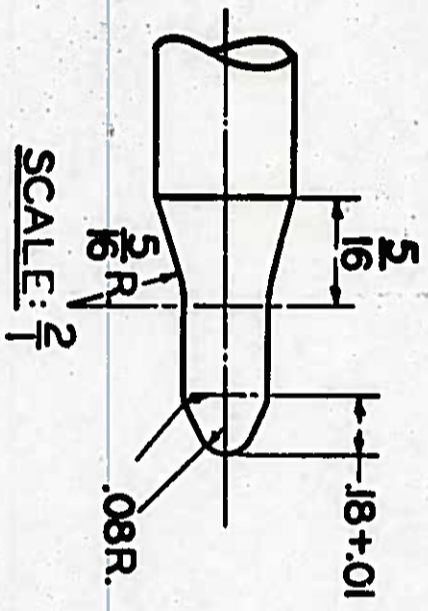
PHYSICAL PROPERTIES	OCTOBER 14, 1938
Y.P.	A
T.S.	SEE F.O.
EL-2	11-9-57
RED.	
HT.T	LOCAL
BR.	280
	310
SCL.	
CC.	

DRG. PERTAINS TO
52-85
D1786

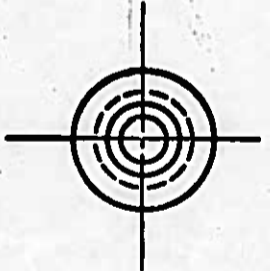
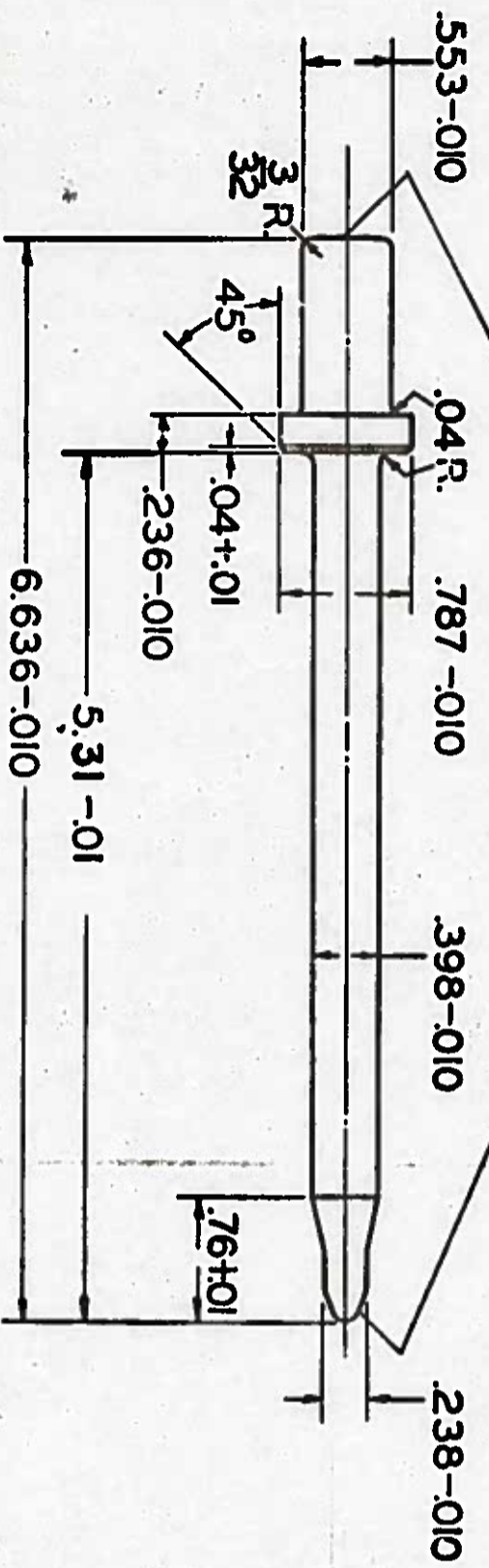
SYMBOL	WCH18
DESIGNED BY	TRACER LOG DFTS
CHECKED BY	R.C.F.
APPROVED BY	C.T.K.
DATE	10/14/38
DEPT.	ORD. DEPT. U.

FROM 52-85-24
C3747

OCTOBER 14, 1938	
PHYSICAL PROPERTIES	REVISIONS
Y.P. —	A OBSOLETE
T.S. —	SEE E.O.
EL-2 —	11663
RED. —	11-4-57
HT.T. LOCAL.	
BR. —	
SCL. —	
C.G. —	
ROCK C44	
C48	



NOTE:- HARDEN ENDS



PIN FIRING
STEEL WD 2340
FINISH f
B8378

SCALE 1
FROM 52-85-24
B8378

SUBMITTED- <i>Alban</i>			
LT. COL. ORD. DEPT. U. S. A.			
D'FTSMAN	TRACER	L'D.G. D'FTSMAN	
R.C.F.	R.C.F.	D.S.	
CHECKER	CHECKER	CHIEF D'FTSMAN	
C.T.K.	<i>DK</i>	<i>Wag.</i>	

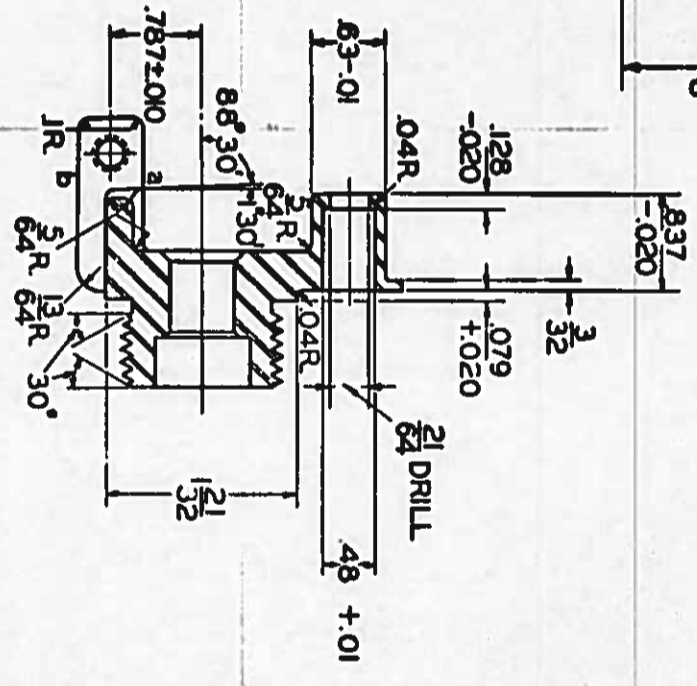
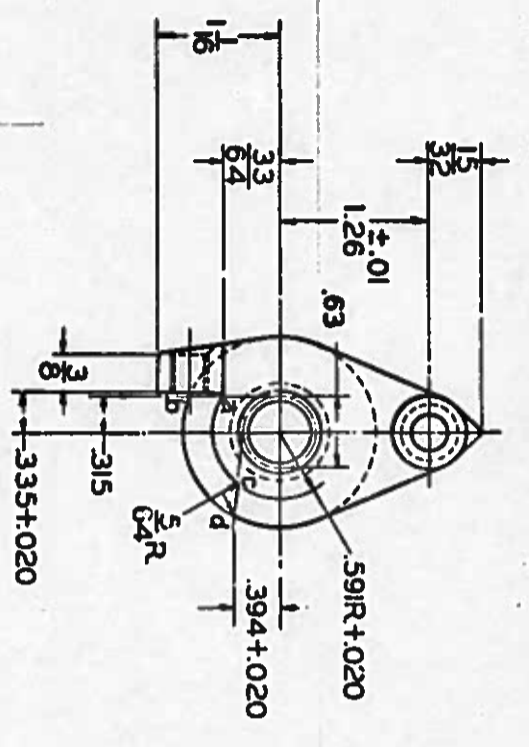
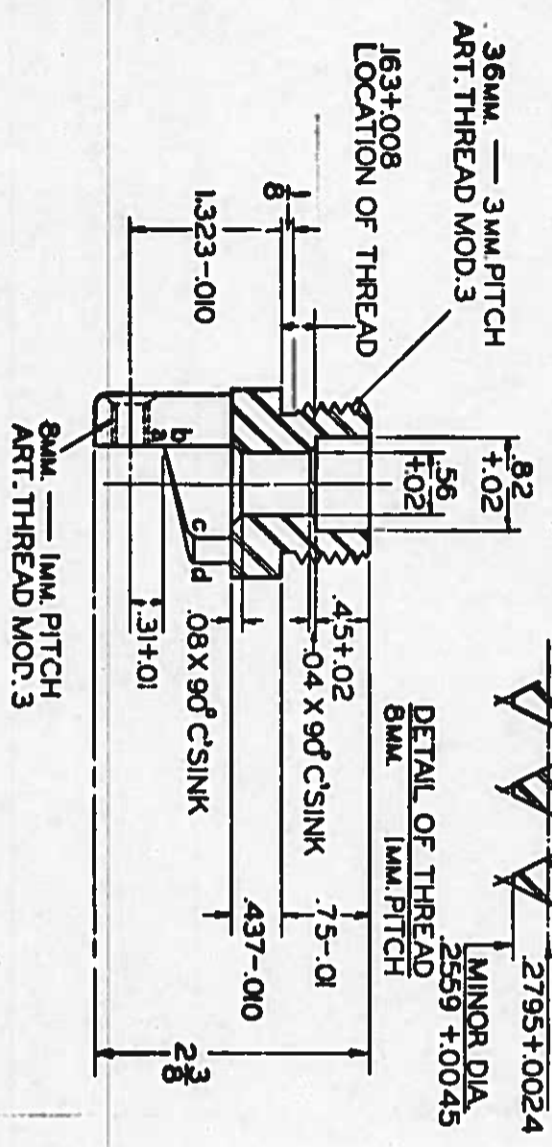
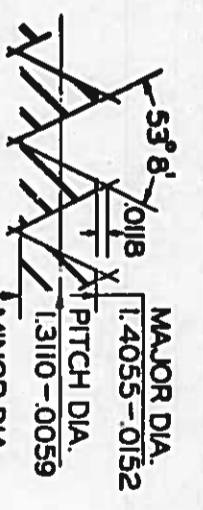
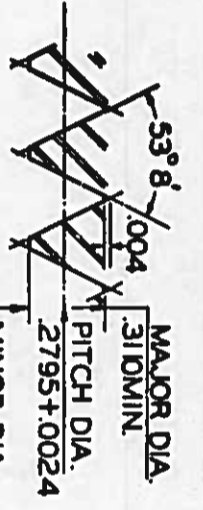
SYMBOL
LAP 24


DRG. PERTAINS TO
52-85
D1786

APPROVED: *J.V. Hinkle*
ORD. DEPT. U. S. A.

PHYSICAL PROPERTIES	OCTOBER 14, 1938
Y.P.	A 0850477E
T.S.	SEE F.T.O.
EL-2	11663
RED.	11-4-52
HT.T.	
BR.	190
SCL.	220
C.C.	

REVISIONS	DRG. PERTAINS TO
52-85	
01786	




PIECE SAFETY  C3749
 STEEL WD1055
 FINISH f

NOTE:-- abc d
 HELICAL SURFACE DEVELOPED BY A LINE a-b AT AN ANGLE OF 88° 30' WITH AXIS AND MOVING ALONG A LEFT HAND HELIX OF (24) .9449 LEAD AND TANGENT TO A (16) .63 DIA. CYLINDER CONCENTRIC WITH AXIS.

SCALE 1/4

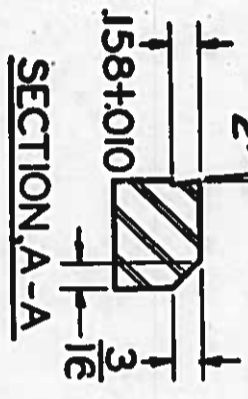
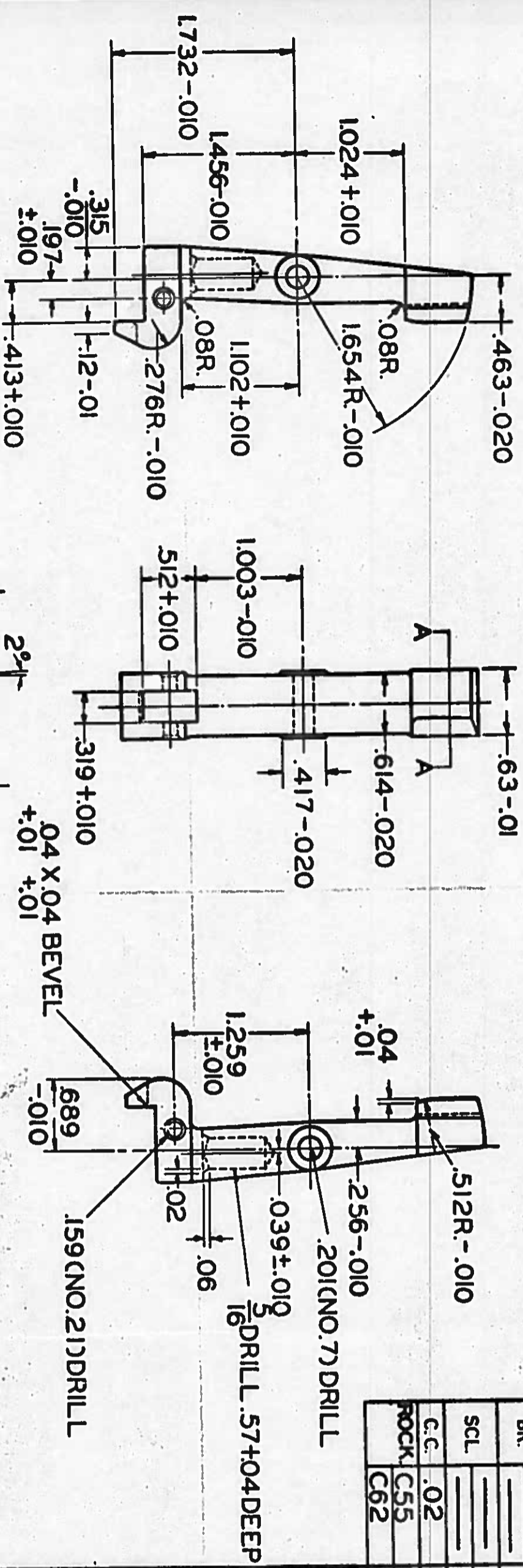
FROM 52-85-26
 C3749

SYMBOL		XDP 917	
BY/MAK	TRACER	DATE	UTM
F.S.R.	F.S.R.	52-85	
CHECKER	CHECKER	CHIEF ENGINEER	
C.T.K.			

APPROVED:  L.T. COL. ORG. DEPT. U.S. AIR FORCE

OCTOBER 14, 1938

PHYSICAL PROPERTIES		REVISIONS	
Y.P.	—	A	08SOLETR
T.S.	—		SEE E.O.
EL-2	—		11663
RED.	—		11-4-59
HT. T.	V		
BR.	—		
SCL.	—		
C.C.	.02		
ROCK.	C55		
	C62		



NOTE:--SHARP CORNERS .03R. FILETS .02R.

LATCH
STEEL WDI020
FINISH f
B8375

SCALE 1/4"

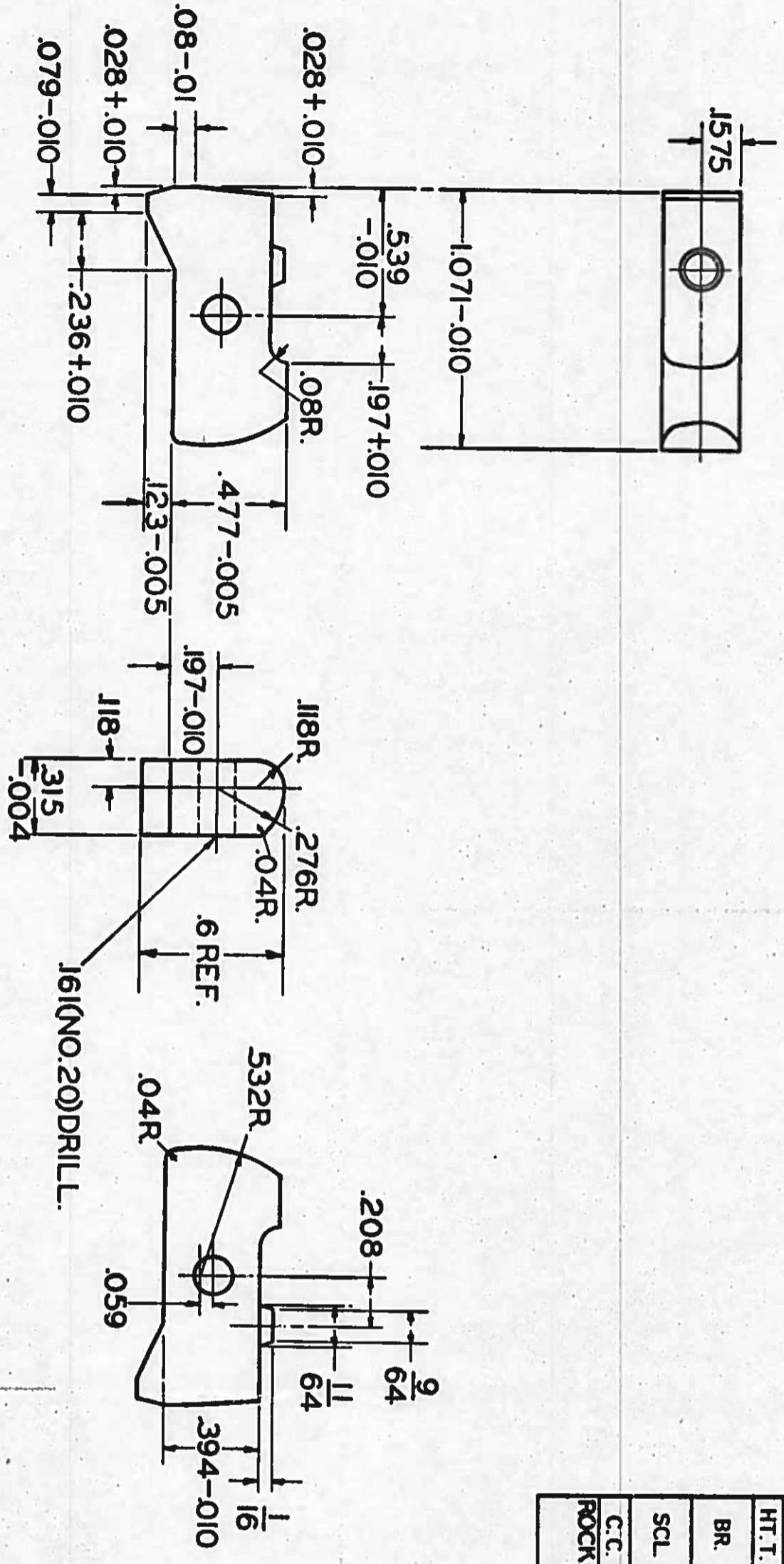
FROM 52-85-26
B8375

SUBMITTED		APPROVED	
DFTSMAN	F.S.R.	TRACER	F.S.R.
CHECKER	C.T.K.	CHECKER	CK
SUBMITTED: <i>[Signature]</i>		APPROVED: <i>[Signature]</i>	

DRG. PERTAINS TO	SYMBOL
52-85	RAL181
D1786	

LT.COL. ORD. DEPT. U. S. A.

ORD. DEPT. U. S. A.



PAWL
STEEL WD1020
FINISH f
B8376

PHYSICAL PROPERTIES		REVISIONS	
Y.P.	—	A	OBsolete
T.S.	—		SEE E.O.
EL-2	—		11663
RED.	—		11-4-59
HT.T.	V		
BR.	—		
SCL	—		
C.C.	.015		
ROCK.	C55		
	C62		

DRG. PERTAINS TO
52-85
D1786

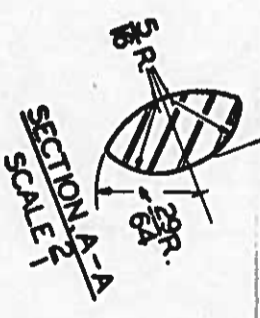
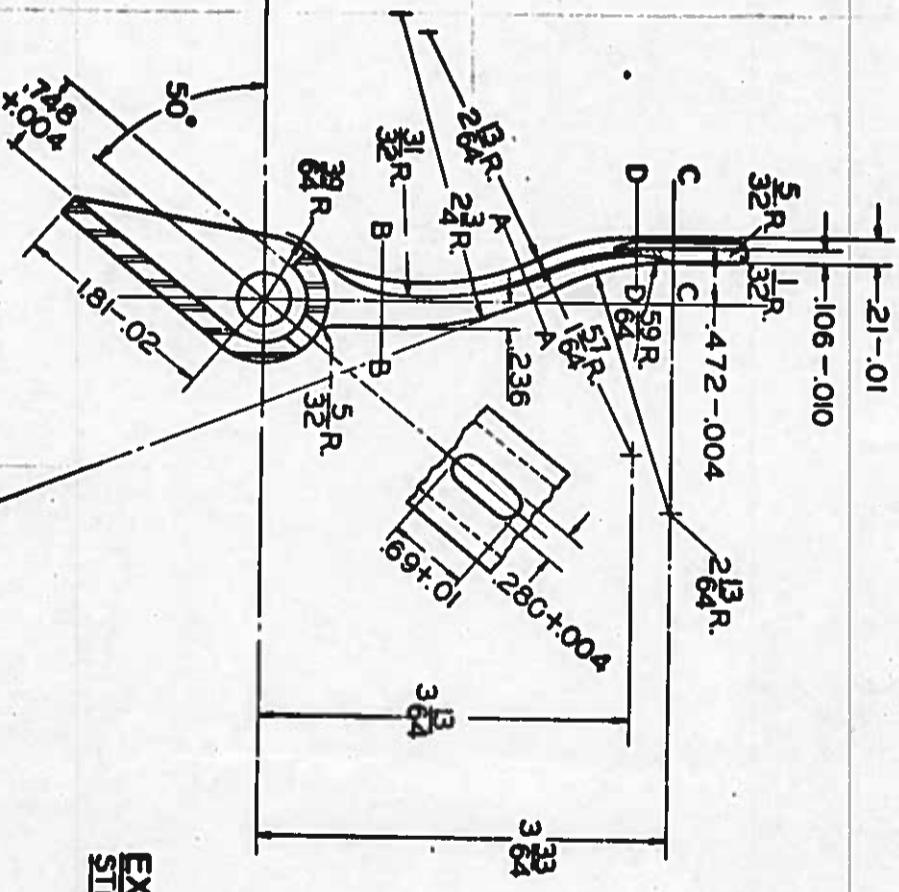
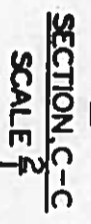
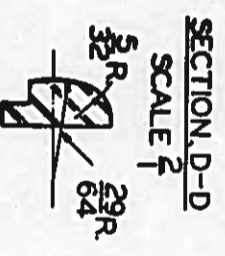
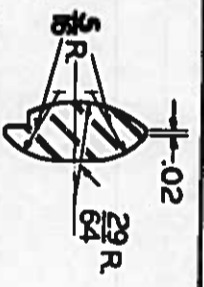
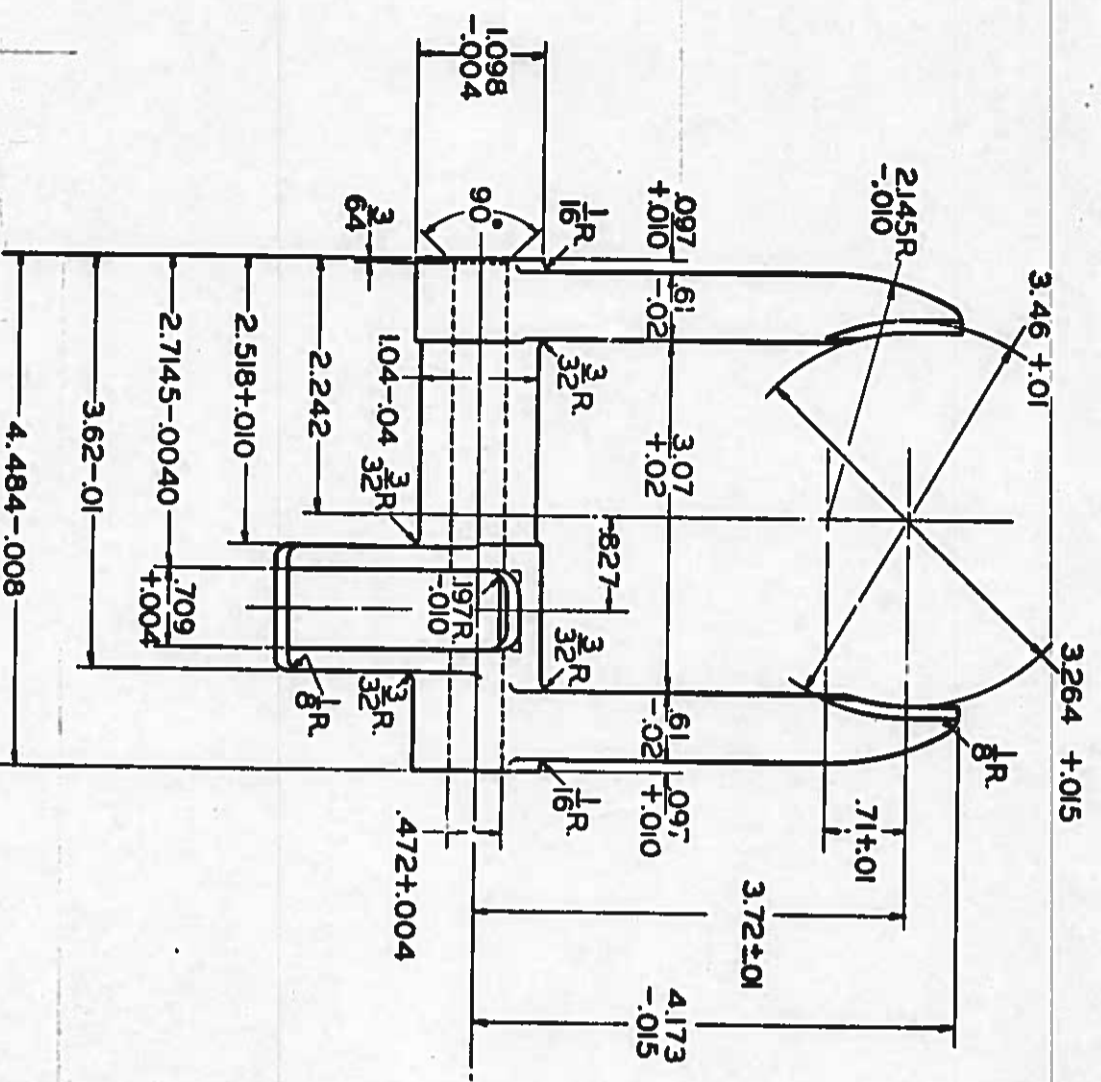
SYMBOL
OCP125

D'FTSMAN	TRAGER	L'D.G. D'FTSMAN
F.S.R.	F.S.R.	W.S.
CHECKER	CHECKER	CHIEF D'FTSMAN
C.T.K.	CR	219

SUBMITTED: *Alban*
LT. COL. ORD. DEPT. U.S.A.

APPROVED: *J.V. Nickle*
ORD. DEPT. U.S.A.

FROM 52-85-26
SCALE 2/1
B8376



EXTRACTOR
STEEL WD1095
FINISH f
C3746

PHYSICAL PROPERTIES	OCTOBER 14, 1938
Y.P.	A OBSOLETE
T.S.	SEE E.O.
EL-2	11663
RED.	11-V-59
HT.T.	V1
BR.	
SCL.	
C.C.	
ROU.	C46
	C50

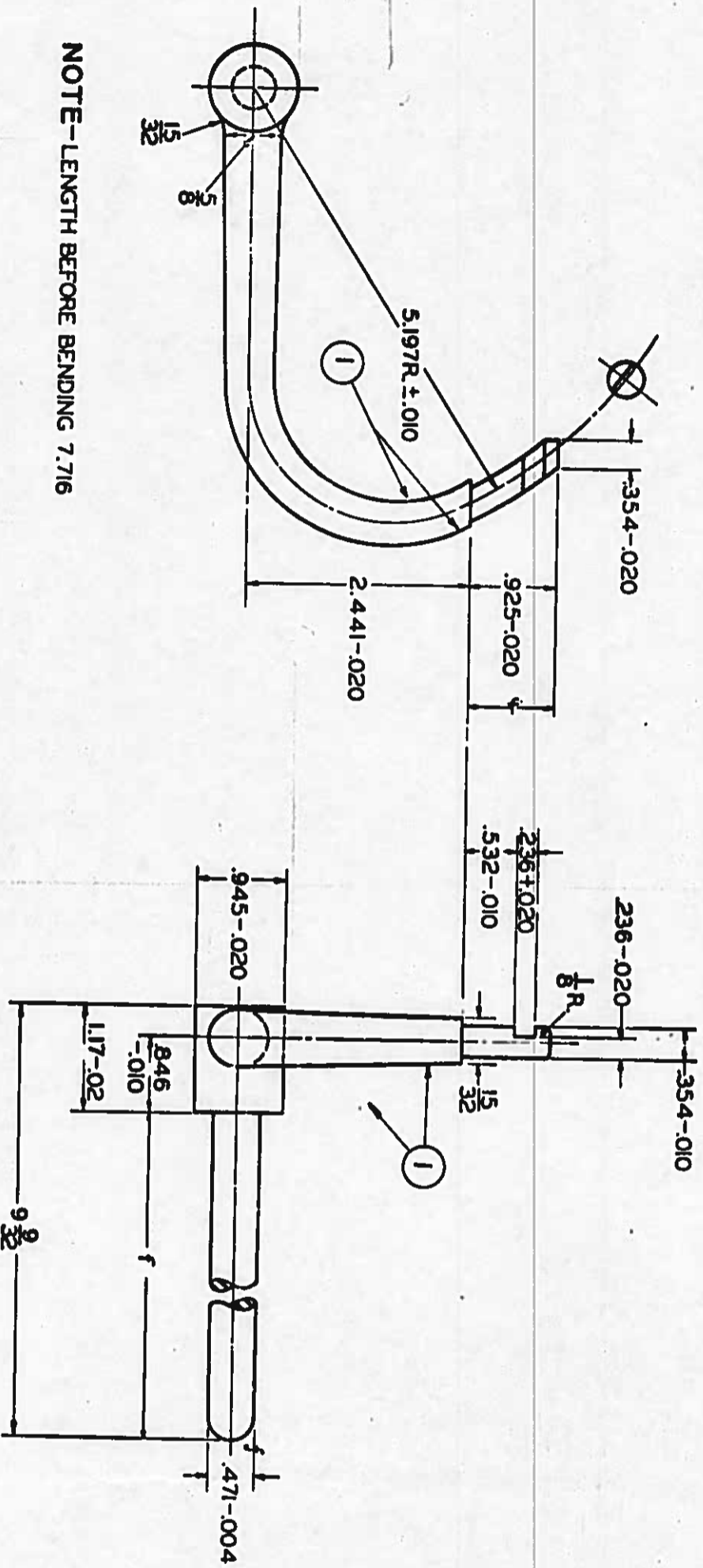
DRG. PERTAINS TO
52-85
D1787

FROM 52-85-27
SCALE f
C3746

SYMBOL	
BBE33	
DESIGNED BY	TRACER
CHECKED BY	F.S.R.
APPROVED BY	CHIEF ENGINEER
LTCOL. ORD. DEPT. USA	

PHYSICAL PROPERTIES	DATE	REVISIONS
Y.P.	1	9-15-39
T.S.	2	08304ETC
EL-2		SEE E.O.
RED		11663
HT.T		11-4-59
BR.	180	
	210	
SCL.		
C.C.		

DRG. PERTAINING TO
52-85
D1787



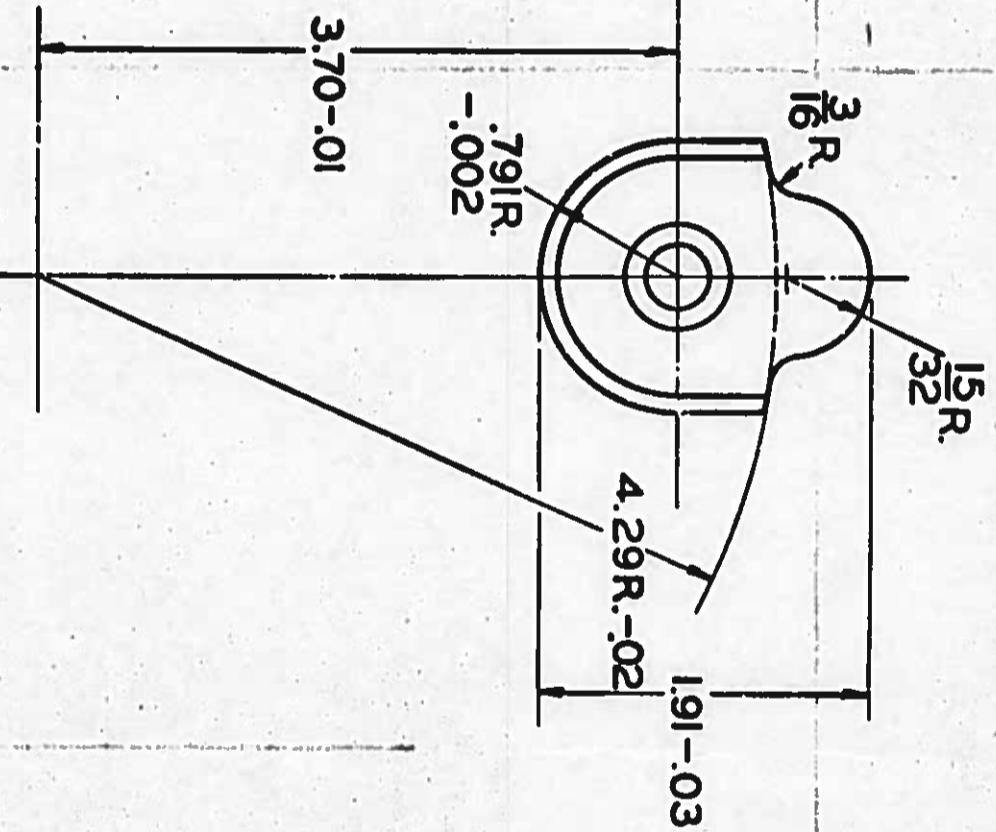
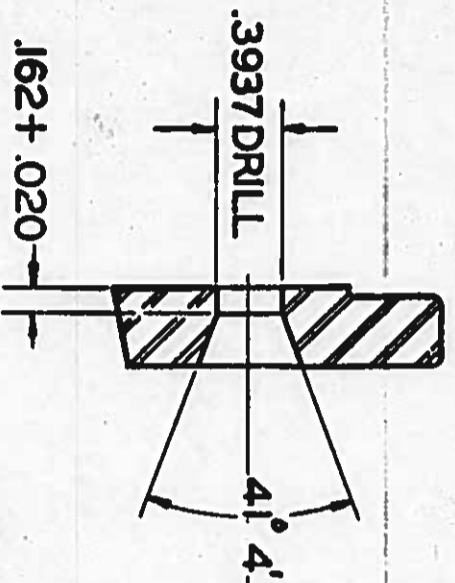
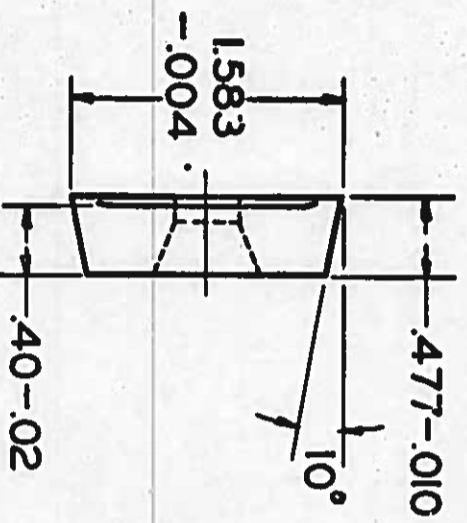
NOTE--LENGTH BEFORE BENDING 7.716

SPINDLE C3751-1
STEEL W/D1055
FINISH CF

SCALE 1/16"

FROM 52-85-27
C3751

SYMBOL	WGS194
DRISMAN TRACER	DOG DRISMAN
R. G. F.	R. C. F.
CHEMICAL CHECKER	CHEMICAL CHECKER
G. T. K.	ER
SUBMITTED	
APPROVED	
LT COL. ORD. DEPT. US	
ORD. DEPT. US	



TRIP
STEEL WD 2340
FINISH f
B8382

SCALE †

B8382

PHYSICAL PROPERTIES		REVISIONS	
Y.P.	—	A	OBsolete
T.S.	—		SEC E.O.
EL-2	—		1/663
RED.	—		11-4-59
HT.T.	VI		
BR.	—		
SCL	—		
C.C.	—		
ROCK.	C40		
	C45		

DRG. PERTAINS TO
D1787

SYMBOL

KDT 4

D'FTSMAN	TRACER	L'D'G. D'FTSMAN
F.S.R.	F.S.R.	D.S.
CHECKER	CHECKER	CHIEF D'FTSMAN
C.T.K.	DK	gze

SUBMITTED-

LTCOL. ORD. DEPT. U. S. A.

APPROVED:
[Signature]
ORD. DEPT. U. S. A.

OCTOBER 14, 1938